



GDG GRADUATE PROGRAMME

ABOUT US



At Gavin & Doherty Geosolutions (GDG), we are experts at finding innovative engineering solutions to support some of the most challenging offshore wind, marine and infrastructure projects around the world.

Offering advice, consultancy support and engineering expertise, our team of specialist engineering consultants is focused on developing the most sustainable design solutions for our clients.

With a foundation in geoscience and geotechnical engineering, our expertise has grown to include foundation design, cable engineering and general civil infrastructure design.

At GDG, we thrive on engineering innovation, and our team of industry experts constantly push boundaries to define a new state-of-the-art.

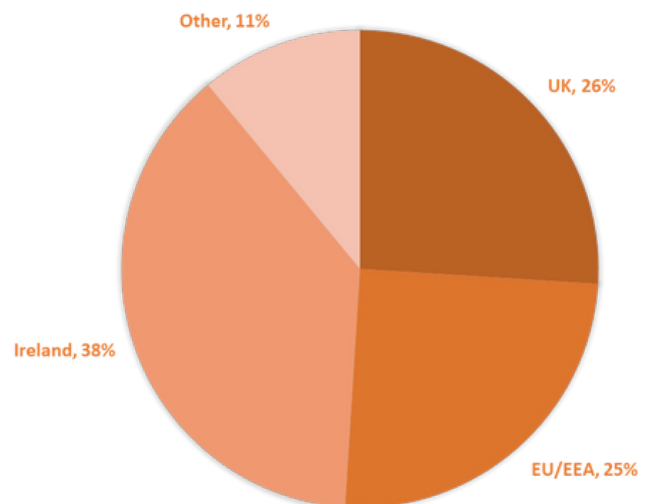


From offices in **Ireland** (Dublin, Cork) and the UK (Belfast, Edinburgh, Bath and London), Utrecht in the **Netherlands** and Rhode Island in **USA.**, we service the international market and have worked on projects relating to offshore wind, infrastructure, civil and geotechnical design, risk management and Research and Development.

Established in 2011, we have grown to over 120 people from many different nationalities and cultural backgrounds.

We are a people business. Our staff are highly qualified and are committed to delivering the best possible outcome for our clients.

NATIONALITIES



We are:

- Entrepreneurial
- Responsible
- Innovative
- Responsive
- Respectful

OUR SERVICES



Specialist design and consultancy services to the offshore renewables sector



Specialist design and consultancy services to commercial and residential developments



Professional environmental consultancy services from site selection to asset disposal



Specialist marine civil and structural design expertise



Geotechnical, civil and structural design solutions for a wide range of infrastructure projects



Specialist design and consultancy services to onshore wind, solar and electrical grid sectors



OUR GRADUATE PROGRAMME

Our Graduate Training Programme is designed to support the development of future leaders within our organisation.

Every year, we open our programme to students across a wide range of disciplines. We support you from day one, with training and mentoring. We also provide a tailored development plan, to help structure your progress.

While working on inspiring projects, you'll get the chance to network with other graduates and more senior colleagues, building your confidence as your experience grows.

LIFE AT GDG



Staff engagement



Training



Collaboration



Leadership

Heidi Brede

Design Engineer

I started my career with GDG in January 2020.

With a background in marine structural engineering, I knew next to nothing about geotechnical engineering at the time, but found excellent mentors and teachers within my team at GDG. Since then, I have worked on a variety of projects which have taught me a great deal. I now feel confident as a geotechnical engineer, and know that I have highly competent, helpful and friendly colleagues to support me should I need it.



John O'Donovan

Associate Director

I joined GDG in 2016 when we were a company of just 12 people and have seen it grow to over 120 people. It has been a very exciting journey for the company and for me. I started in GDG as a Design Engineer and now work as an Associated Director leading a team of 13 engineers.

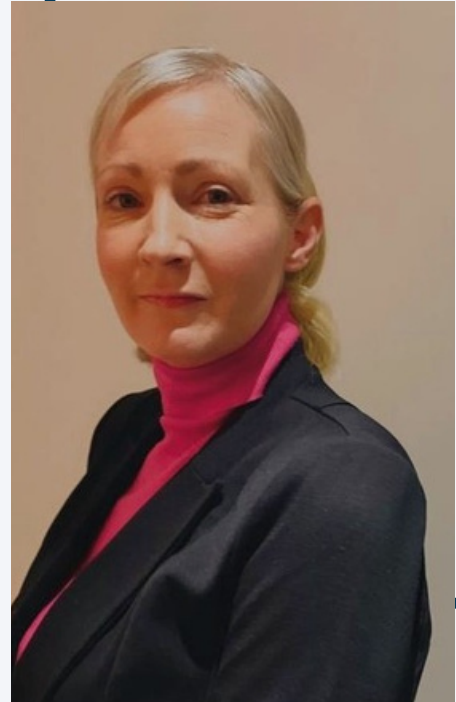
The team ethos is very important in GDG and neither work nor people are placed in silos. Graduates can expect a diverse portfolio of projects from the start and will work across teams. GDG is an excellent company in which to grow professionally and personally.



Julie Ryan

Office Manager

What a great company to work for! It is refreshing to work in a company where you know that the management care about their staff. GDG have some great initiatives which have been created by both staff members and management alike, this is a company where staff are encouraged to be creative, submit their ideas and give their feedback to make it a better work environment and to further the goals of the company. The staff in GDG are all lovely people and it really is a privilege to work with a team that supports each other and are always willing to help out to get projects and tasks over the line. I'm very happy to be working for GDG and I would highly recommend them as an employer!



Louis Marin Lapastoure

Research Engineer / PhD Candidate

Since joining GDG as a graduate two years ago, I have been involved in a wide range of projects. The guidance of the senior employees has allowed me to learn a lot and improve my existing skills. I also appreciate the work atmosphere at GDG with many social events organised throughout the year.



STRUCTURE



- 30 months duration
- Six-month training rotations in each of our five departments

At the end of each six-month rotation, there will be a defined set of learning outcomes that the graduates will be familiar with. This will be discussed and reviewed with each graduate on an ongoing basis.

Following the Graduate Programme, candidates can apply for a position within their preferred team.

WHAT YOU CAN EXPECT

- Exposure to five different areas of civil engineering within one company.
- Develop technical, commercial and managerial abilities.
- Learn transferable skills.
- Build a solid foundation that will facilitate career growth in the future.



OUR OBJECTIVES

- Attract top talent within the industry.
- Support career progression to enable graduates to realise their full potential.
- Enhance our technical competency with highly-skilled, ambitious people who will shape the world of tomorrow.

IDEAL CANDIDATE

- ✓ Do you have an interest in engineering, renewable energy, sustainability, offshore wind or climate change?
- ✓ Are you a recent graduate from a relevant scientific or engineering background?
- ✓ Do you consider yourself a self-motivated and enthusiastic person?
- ✓ Are you a team player that would fit within a dynamic and flexible delivery structure?
- ✓ Are you interested in a fast-paced and exciting range of project opportunities?

OUR PROMISE TO YOU



Competitive salary

Structured training

**Promotion upon
completion**

HOW TO APPLY?

Email your CV to careers@gdgeo.com with the subject Graduate Training Programme.

GDC

GAVIN & DOHERTY
GEOSOLUTIONS

For inquiries, contact us.



www.gdgeo.com



info@gdgeo.com



+353 (0) 1 207 1000

Unit A2 Nutgrove Office Park, Rathfarnham
Dublin 14 D14 X627, Ireland