

A large red and white offshore supply vessel is positioned in the ocean, supporting the installation of a massive white wind turbine. The vessel has two tall cranes and various equipment on deck. The turbine's three blades are spread out against a clear blue sky. The water is a deep blue.

GDBG GRADUATE PROGRAMME

ABOUT GDG



GDG is a specialist engineering consultancy, providing innovative solutions across a broad range of civil engineering sectors.

Our aim is to provide an innovative, cost-effective and reliable service designed to meet and exceed our clients' requirements to both the domestic and international markets.

We strive to attain the highest possible standards and are consistently looking to pioneer and develop new technologies and techniques while ensuring that all relevant design codes and practices are met and exceeded.

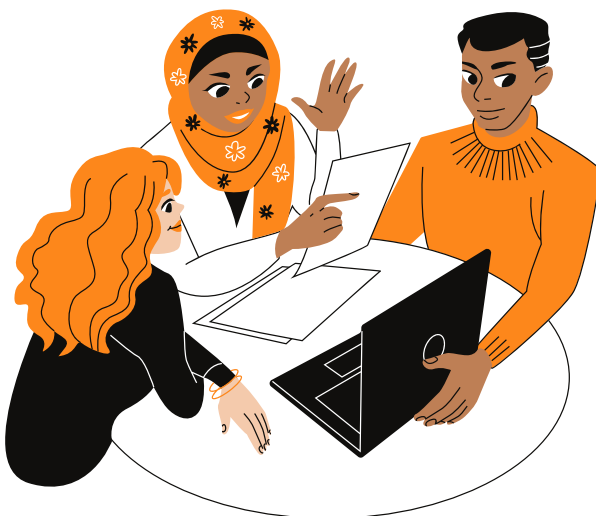
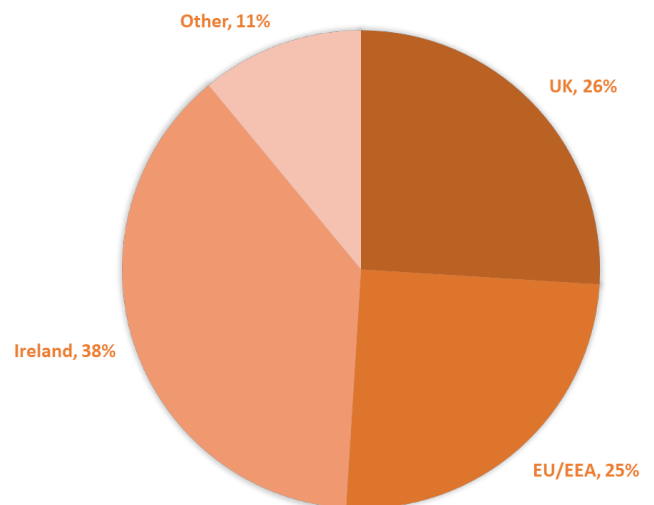


From offices in Ireland (Dublin, Cork) and the UK (Belfast, Edinburgh, Bath and London), Utrecht in the Netherlands and Rhode Island in USA., we service the international market and have worked on projects relating to offshore wind, infrastructure, civil and geotechnical design, risk management and Research and Development.

Established in 2011, GDG has since grown to over 120 people from many different nationalities and cultural backgrounds.

We are a people business. Our staff are highly qualified who are committed to delivering the best possible outcome for our Clients.

NATIONALITIES



We are:

- Entrepreneurial
- Responsible
- Innovative
- Responsive
- Respectful

OUR SERVICES



Specialist design and consultancy services to the offshore renewables sector



Specialist design and consultancy services to commercial and residential developments



Professional environmental consultancy services from site selection to asset disposal



Specialist marine civil and structural design expertise



Geotechnical, civil and structural design solutions for a wide range of infrastructure projects



Specialist design and consultancy services to onshore wind, solar and electrical grid sectors



INTRODUCTION TO GDG'S GRADUATE PROGRAMME

GDG is delighted to announce that from 2022 onwards we have initiated a graduate training programme for incoming technical staff. The graduate scheme is a structured training programme run by GDG to develop future leaders within our organisation.

Every year we open our graduate programme to students with degrees in a wide range of disciplines. The programme supports you from day one, with training, mentoring and the opportunity to work on inspiring projects. We provide a tailored development plan, to help structure your progress. You'll also get the chance to network with other graduates and more senior colleagues, building your confidence as your experience grows.

LIFE AT GDG



Staff engagement

Training



Collaboration



Leadership

HEIDI BREDE

Design Engineer

I started my career with GDG in January 2020 with a background in marine structural engineering. I knew next to nothing about geotechnical engineering at the time, but found excellent mentors and teachers within my team at GDG. Since then I have worked on a variety of projects which have taught me a great deal. I now feel confident as a geotechnical engineer, and know that I have highly competent, helpful and friendly colleagues to support me should I need it.



JOHN O'DONOVAN

Associate Director

I joined GDG in 2016 when we were a company of just 12 people and have seen it grow to over 120 people. It has been a very exciting journey for the company and for me. I started in GDG as a Design Engineer and now work as an Associated Director leading a team of 13 engineers.

The team ethos is very important in GDG and neither work nor people are placed in silos. Graduates can expect a diverse portfolio of projects from the start and will work across teams.

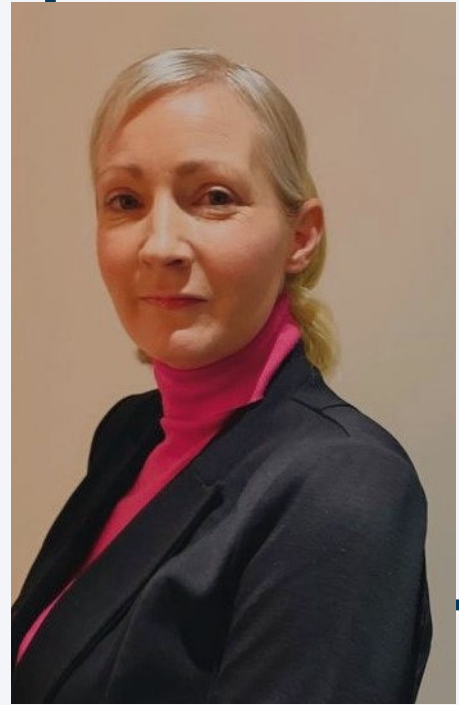
GDG is an excellent company in which to grow professionally and personally.



JULIE RYAN

Office Manager

What a great company to work for! It is refreshing to work in a company where you know that the management care about their staff. GDG have some great initiatives which have been created by both staff members and management alike, this is a company where staff are encouraged to be creative, submit their ideas and give their feedback to make it a better work environment and to further the goals of the company. The staff in GDG are all lovely people and it really is a privilege to work with a team that supports each other and are always willing to help out to get projects and tasks over the line. I'm very happy to be working for GDG and I would highly recommend them as an employer!



LOUIS MARIN LAPASTOURE

Research Engineer / PhD Candidate

Since joining GDG as a graduate two years ago, I have been involved in a wide range of projects. The guidance of the senior employees has allowed me to learn a lot and improve my existing skills. I also appreciate the work atmosphere at GDG with many social events organized throughout the year.



STRUCTURE



- Duration: 30 months
- 5 x 6 months training rotations in each of the departments

At the end of each rotation, there will be a defined set of learning outcomes that the graduates will be expected to be familiar with. This will be discussed and reviewed with each graduate on a 6 monthly interval.

Following the Graduate Programme, candidates can apply for a position within their preferred team.

OBJECTIVE FOR GRADUATES

- Experience exposure to 5 different areas of civil engineering within one company (choose from Structures, Geohazard, Ports & Harbours, Offshore, Infrastructure, Geoenvironmental, R&D)
- Develop their technical, commercial and managerial abilities
- Learn transferable skills. Build a solid foundation that will facilitate career growth in the future.



OUR OBJECTIVES

- Attract the top talent within the industry.
- Facilitate their career progression and enable them to realise their potential.
- Enhance GDG's technical competency with highly-skilled, ambitious people who will shape the world of tomorrow.

IDEAL CANDIDATE

- ✓ Do you have an interest in engineering, renewable energy, sustainability, offshore wind or climate change?
- ✓ Are you a recent graduate from a relevant scientific or engineering background?
- ✓ Do you consider yourself a self-motivated and enthusiastic person?
- ✓ Are you a team player that would fit within a dynamic and flexible delivery structure?
- ✓ Are you interested in a fast-paced and exciting range of project opportunities?

OUR PROMISE TO YOU



Competitive salary

Structured training

*Promotion upon
successful
completion*

HOW TO APPLY?

- Email info@gdgeo.com with the subject "Graduate Training Programme" and attach your CV.
- We will have a regular intake of people in June and September but will also be open to candidates on a rolling basis.

GDC

GAVIN & DOHERTY
GEOSOLUTIONS

For inquiries, contact us.



www.gdgeo.com



info@gdgeo.com



+353 (0) 1 207 1000

Unit A2 Nutgrove Office Park, Rathfarnham
Dublin 14 D14 X627, Ireland